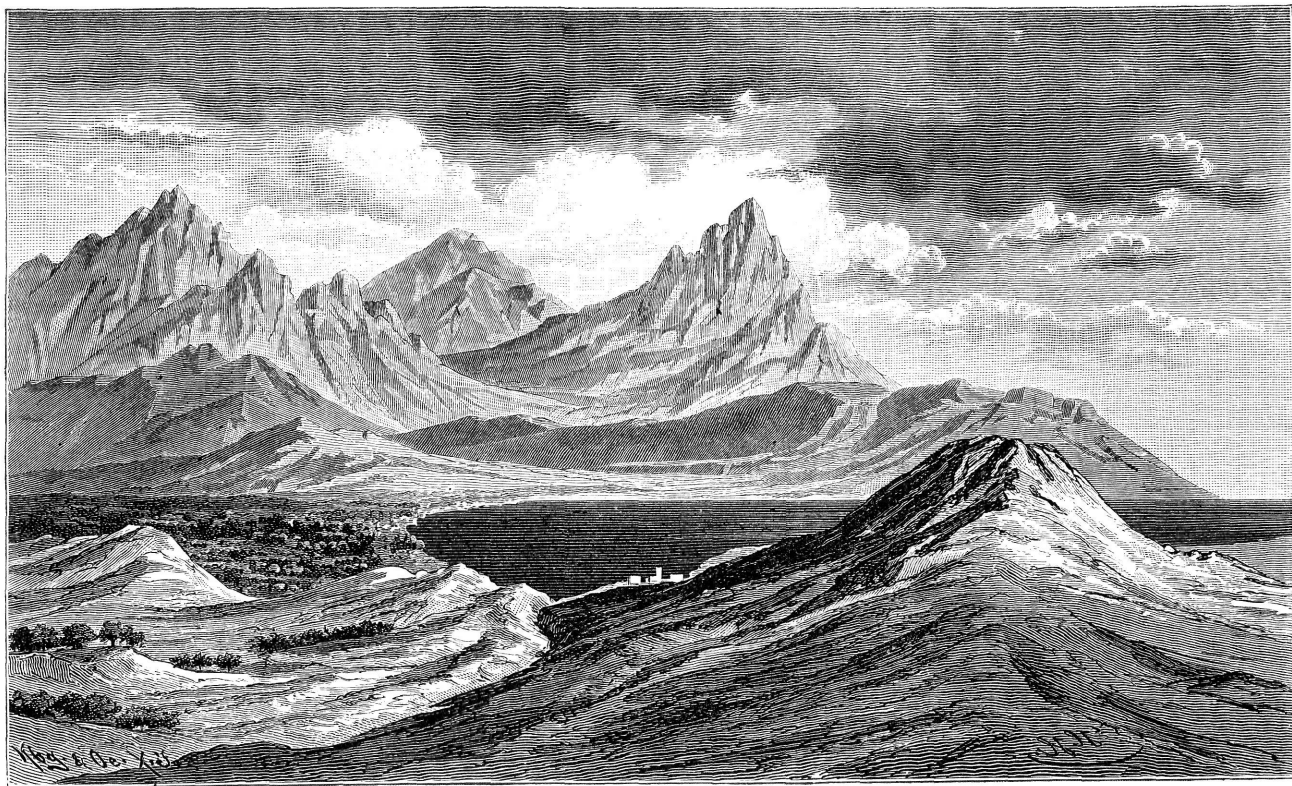
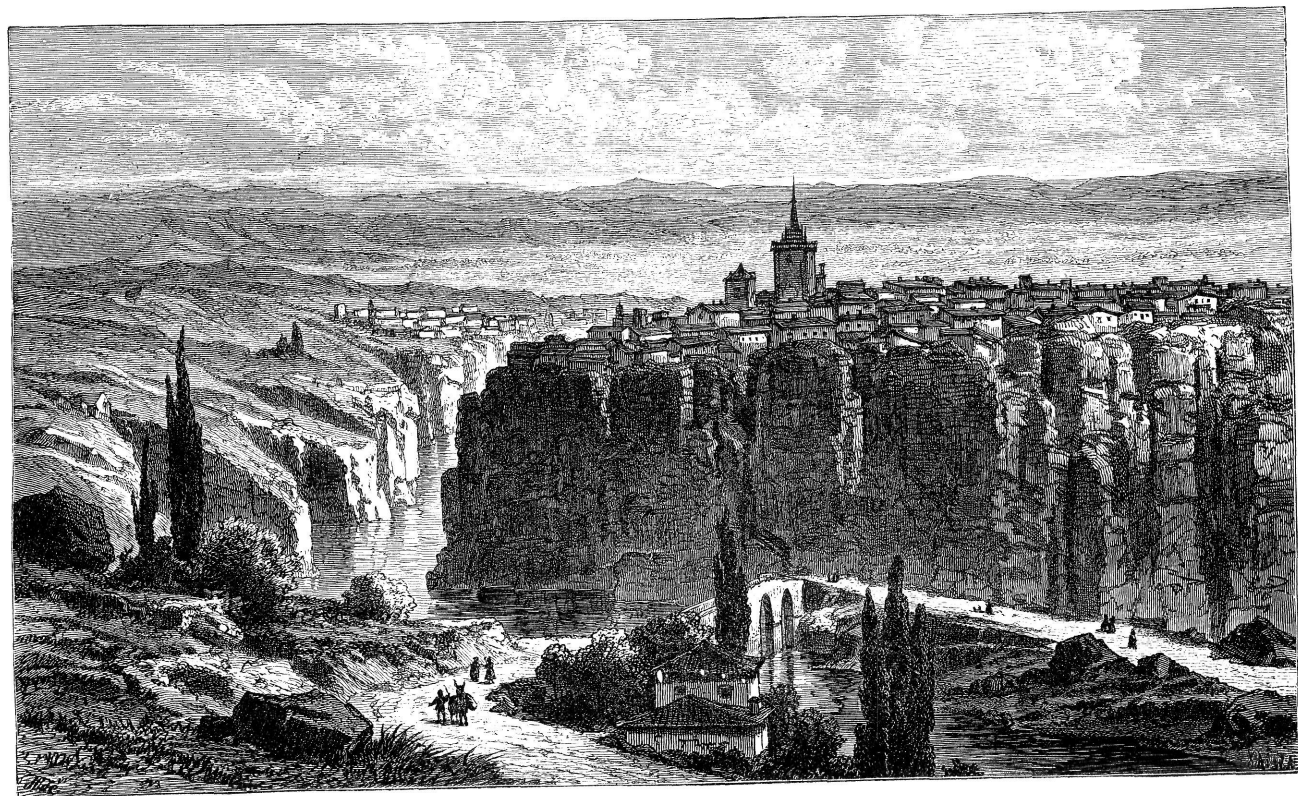


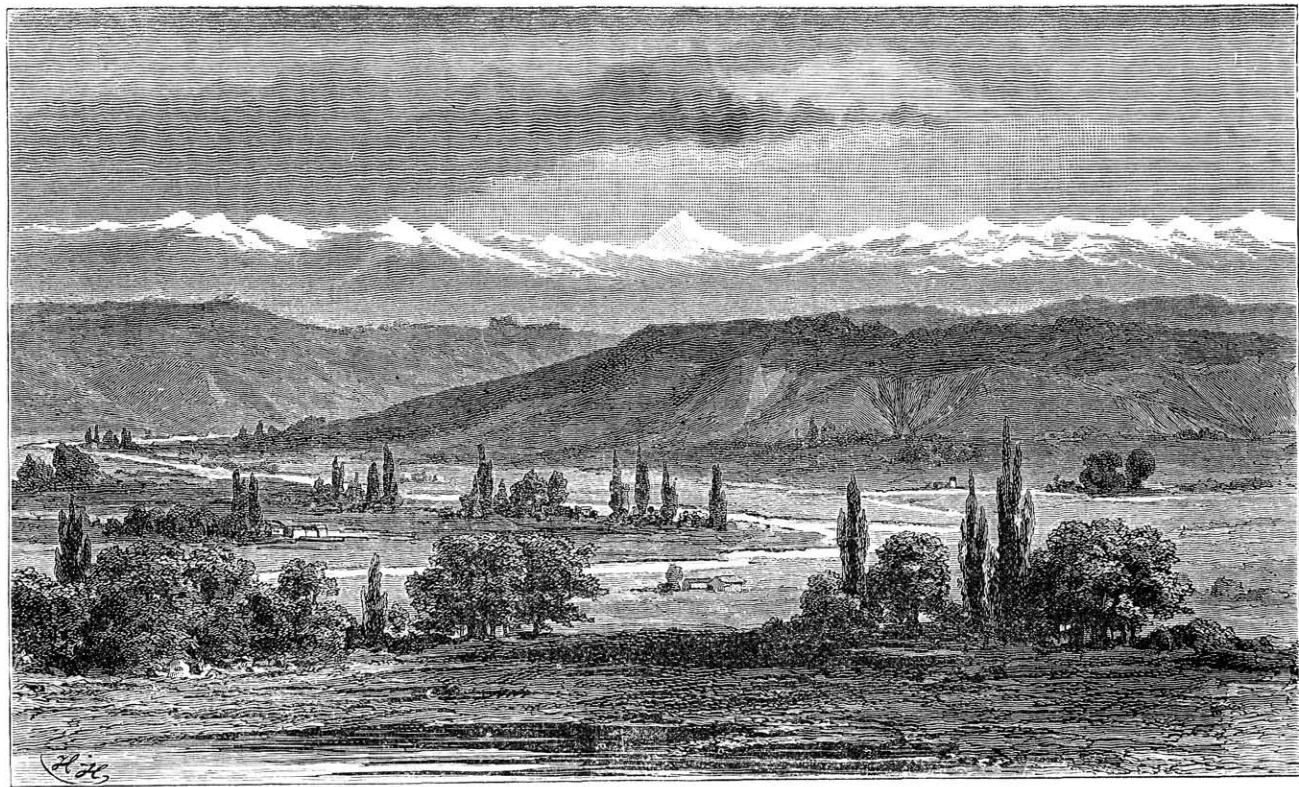
Sl. 2. Utočno jezero Taja (izpred Lisabona).



Sl. 4. Obala kod Alicante.

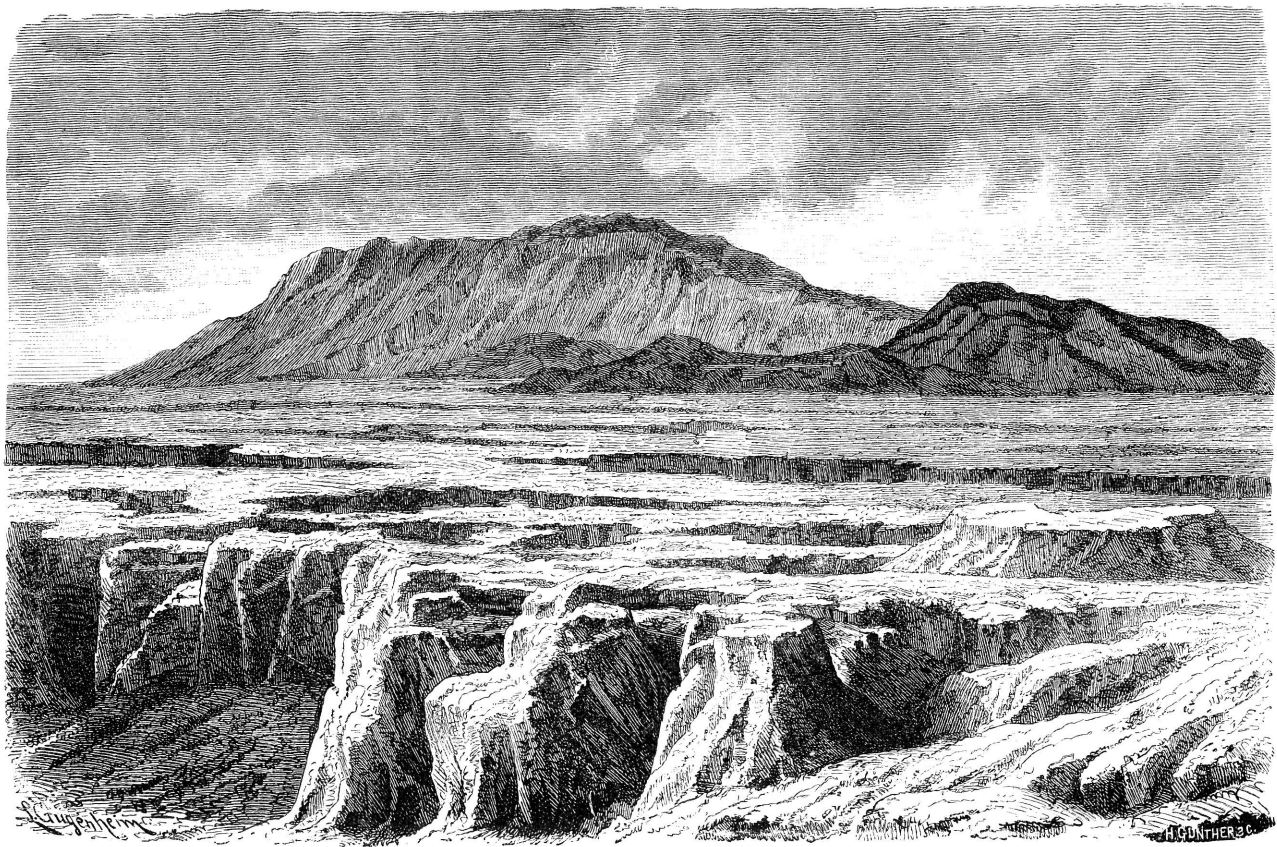


Sl. 5. Dolina Jucara kod Cuence.

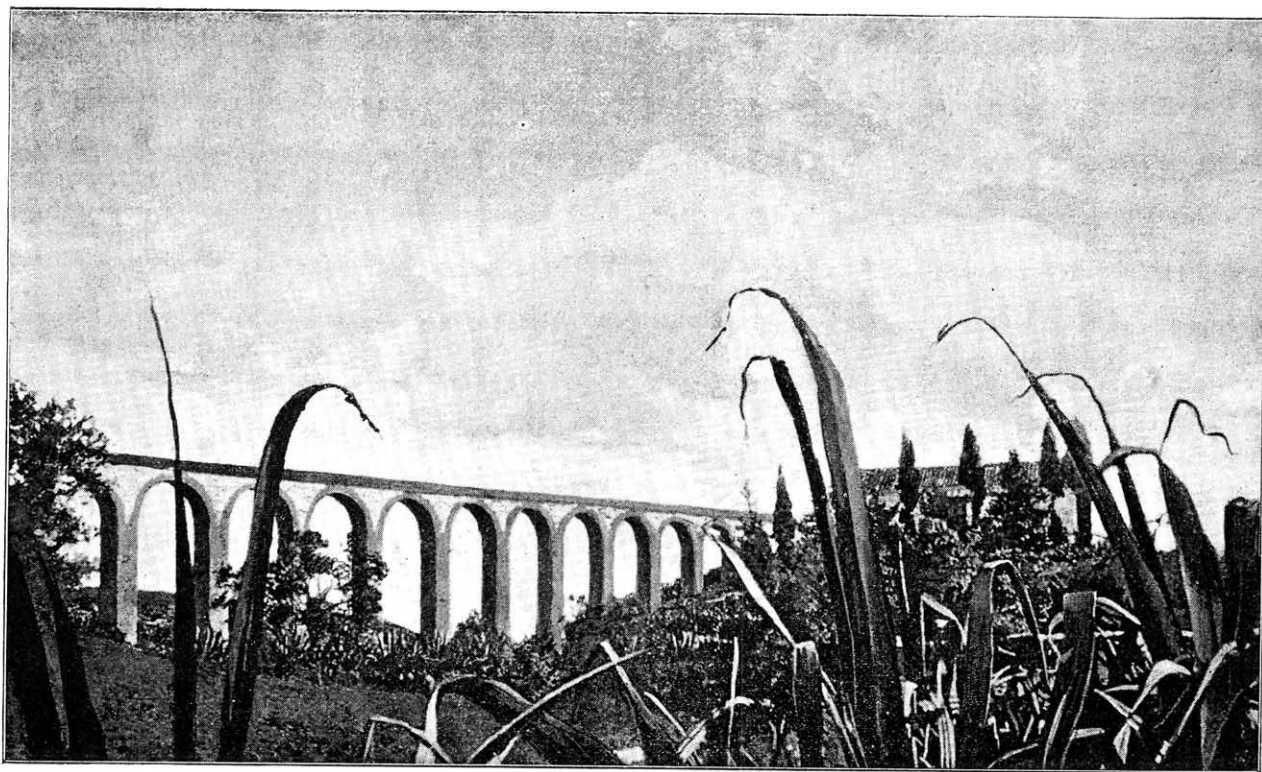


Sl. 6. Pogled na Pireneje sa doline Luchon.





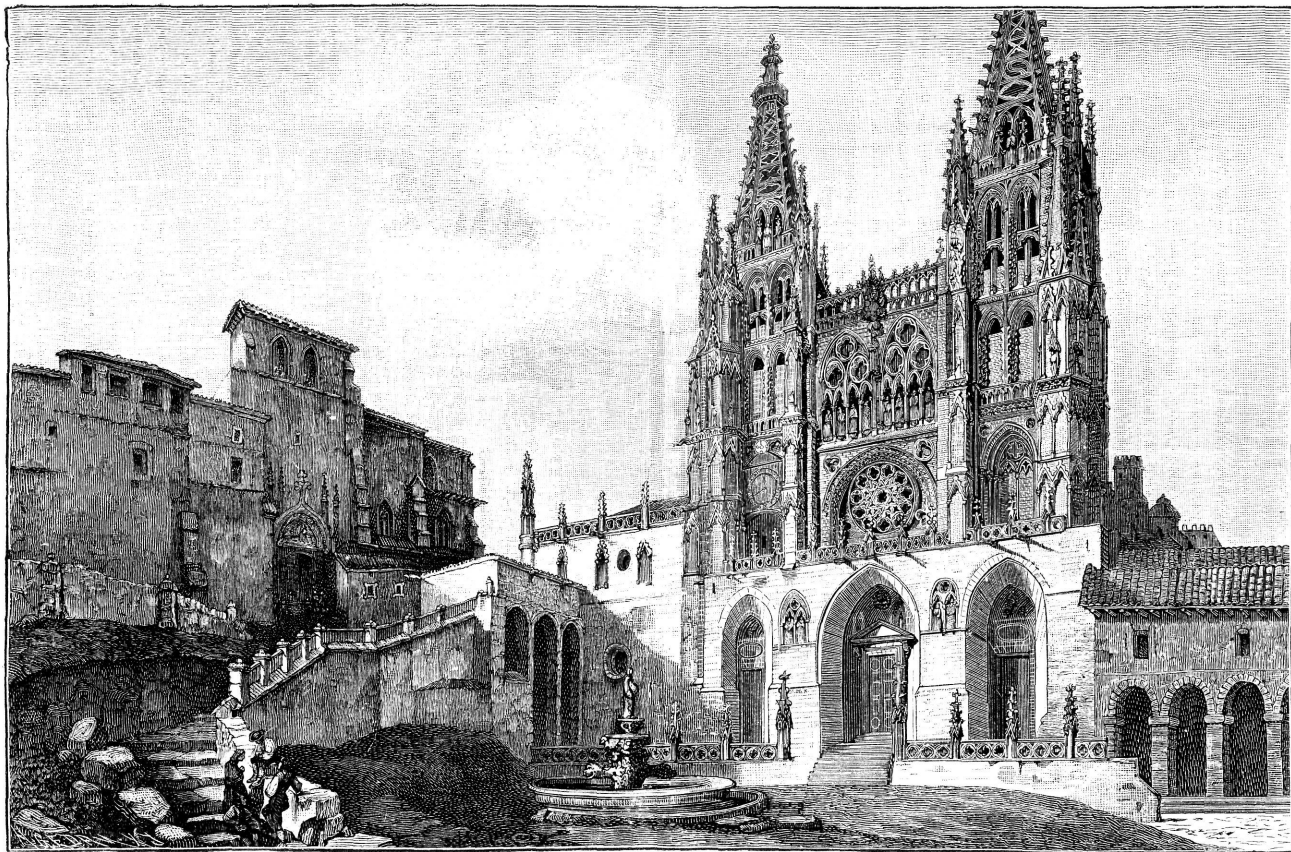
Sl. 8 Sierra Nevada.



Sl. 9. Kultura sladorove trstike u Andaluziji.

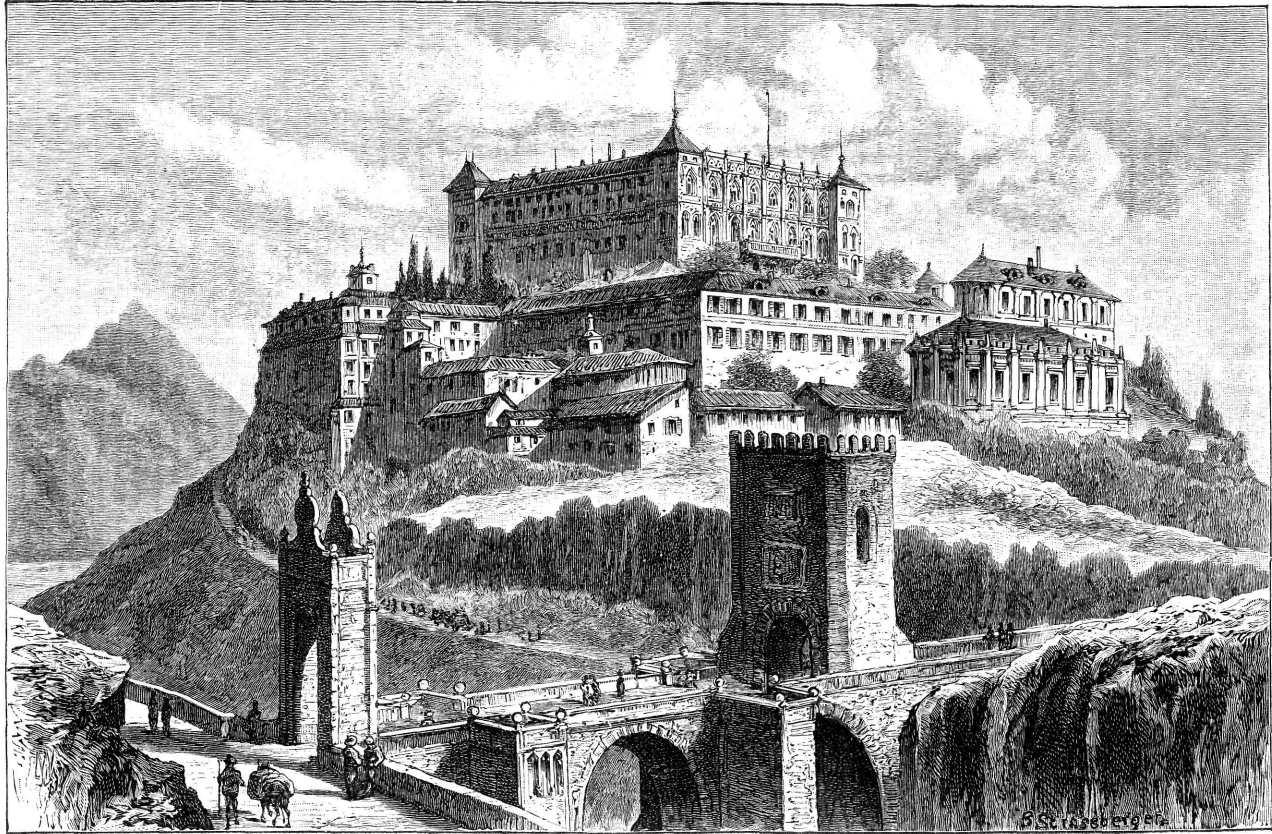


Sl. 12. Ples cigana.

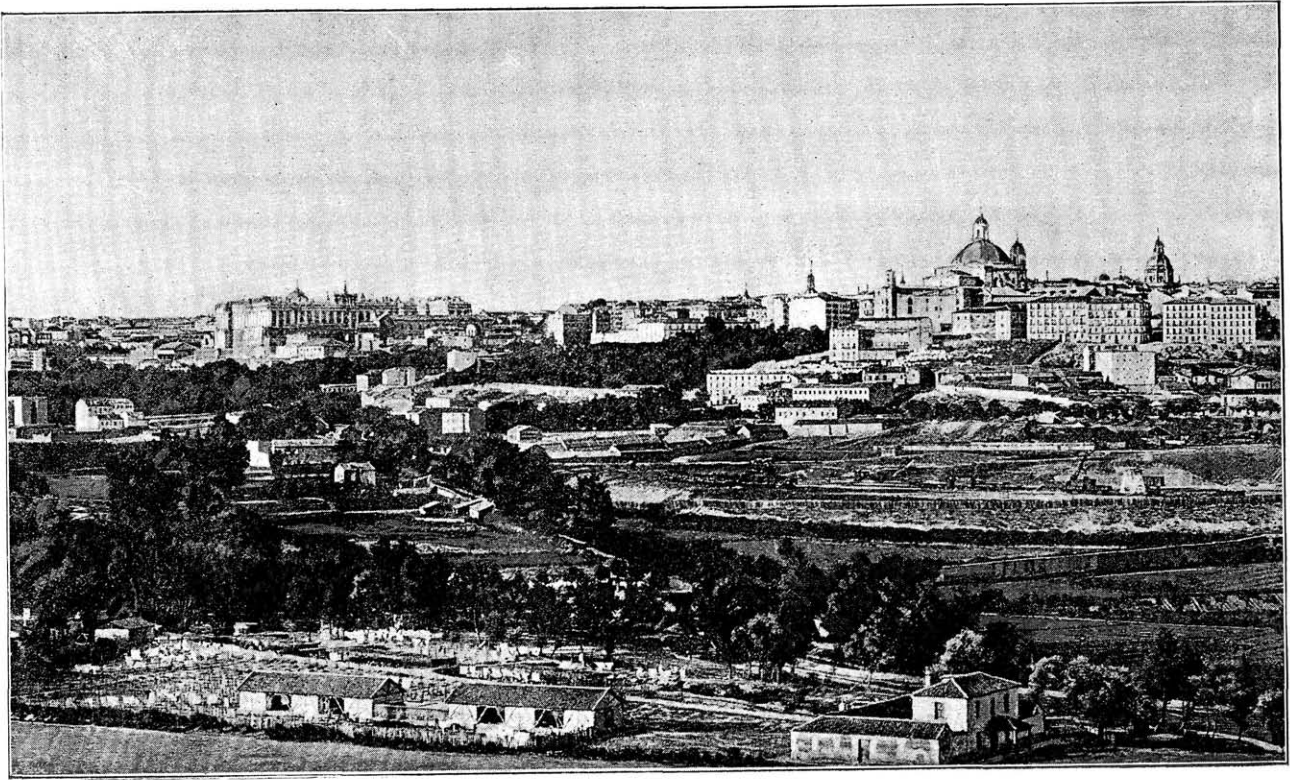


Sl. 16. Stolna crkva u Burgosu.

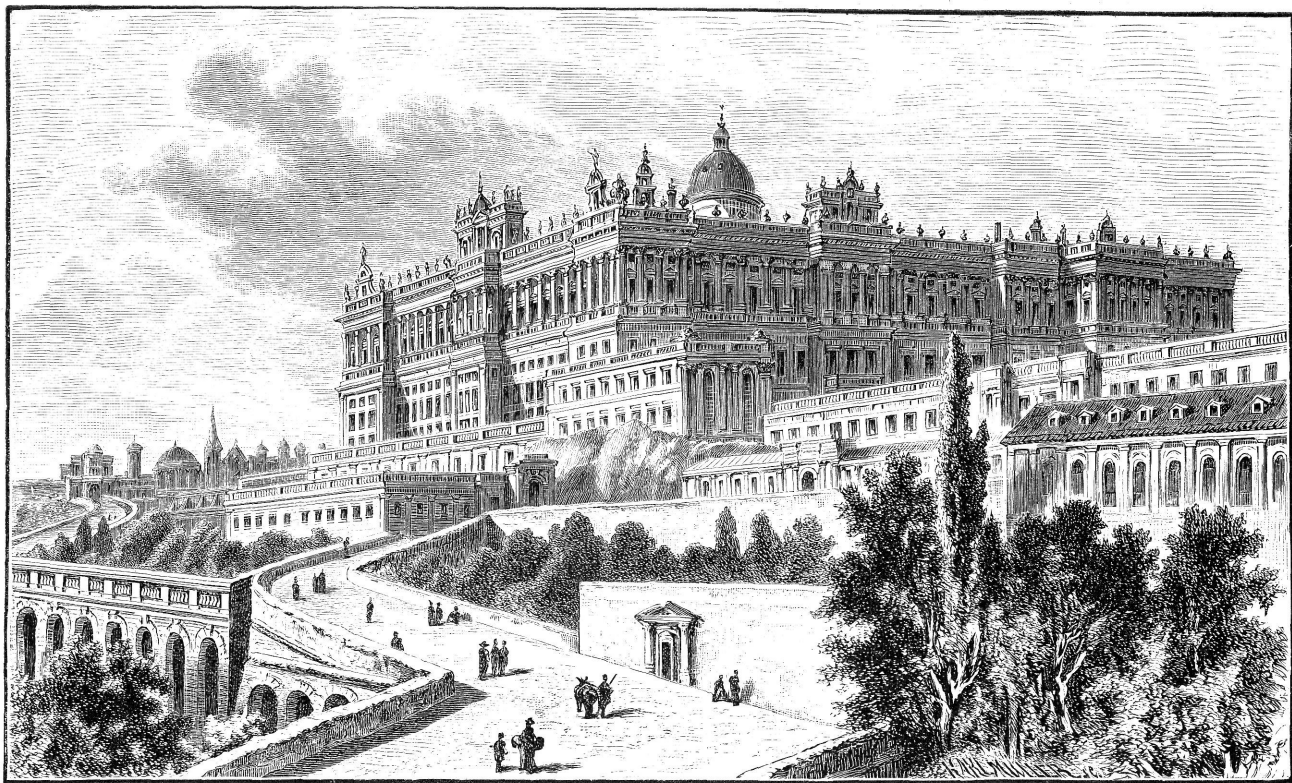




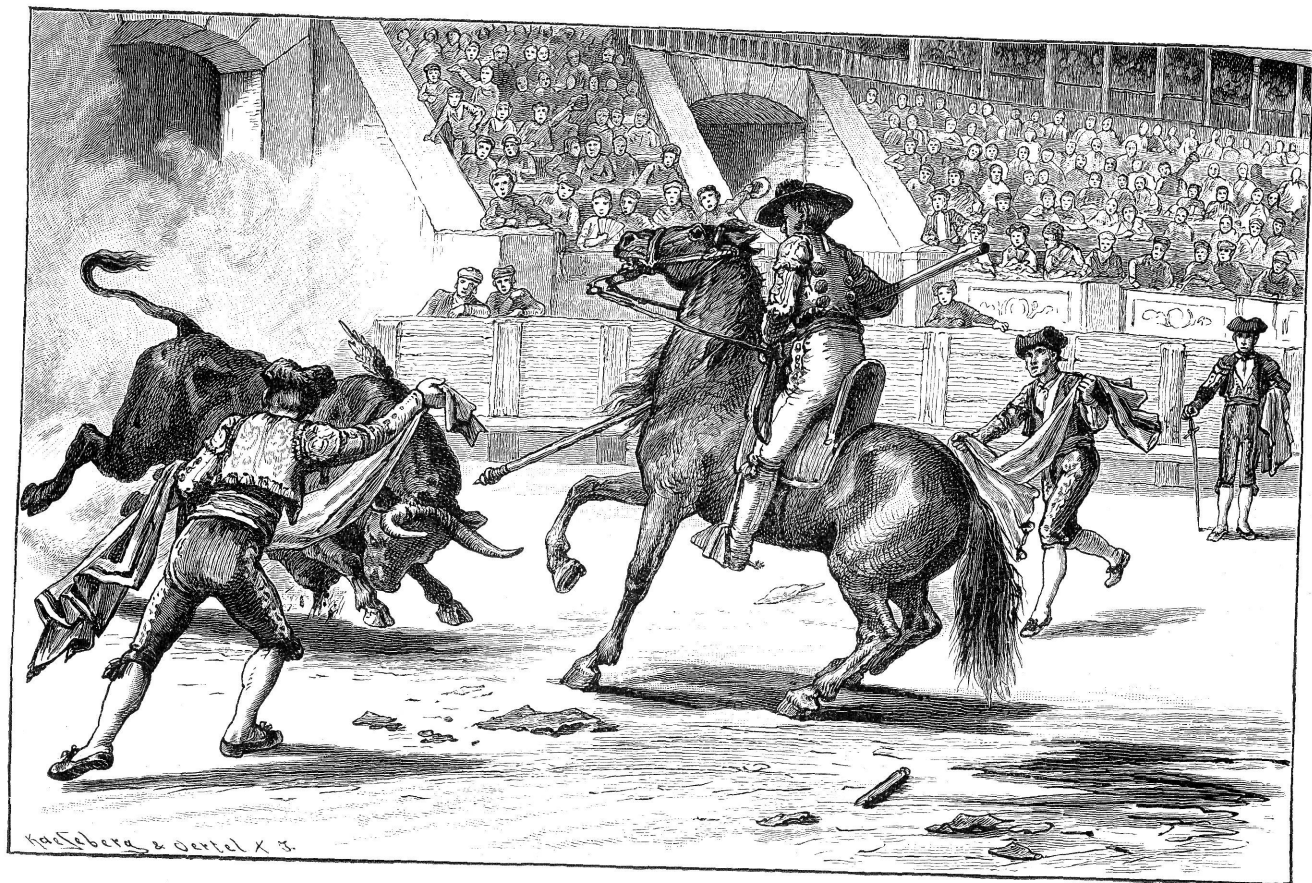
Sl. 17. Toledo.



Sl. 18. M a d r i d.

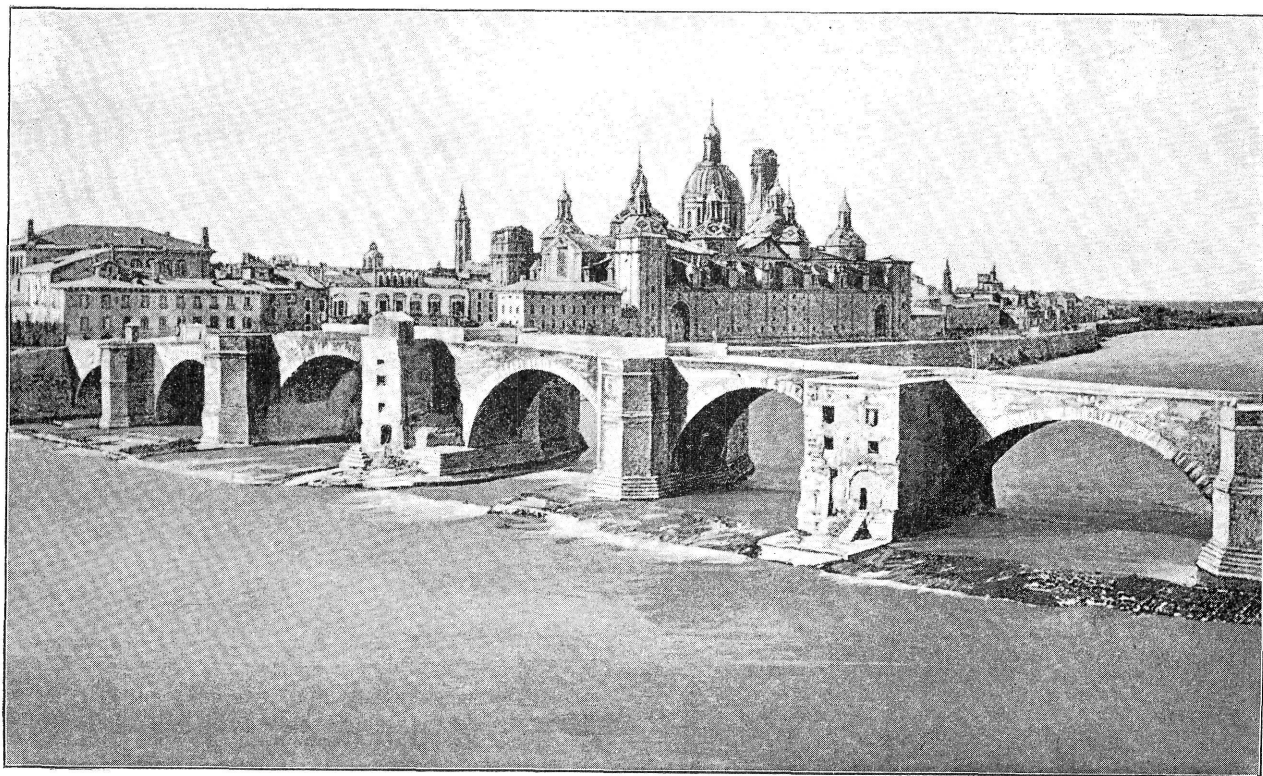


Sl. 19. Kraljevska palača u Madridu.

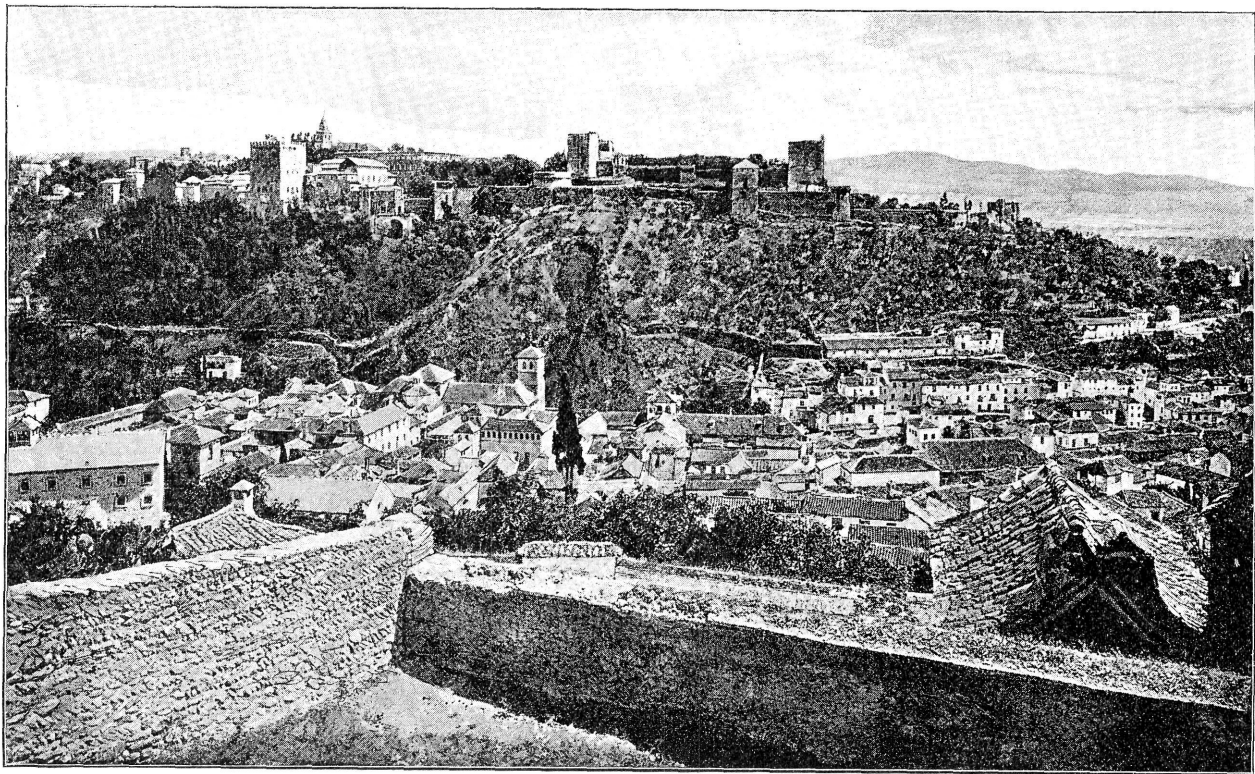


Sl. 21. Prizor iz borbe sa bikovi.

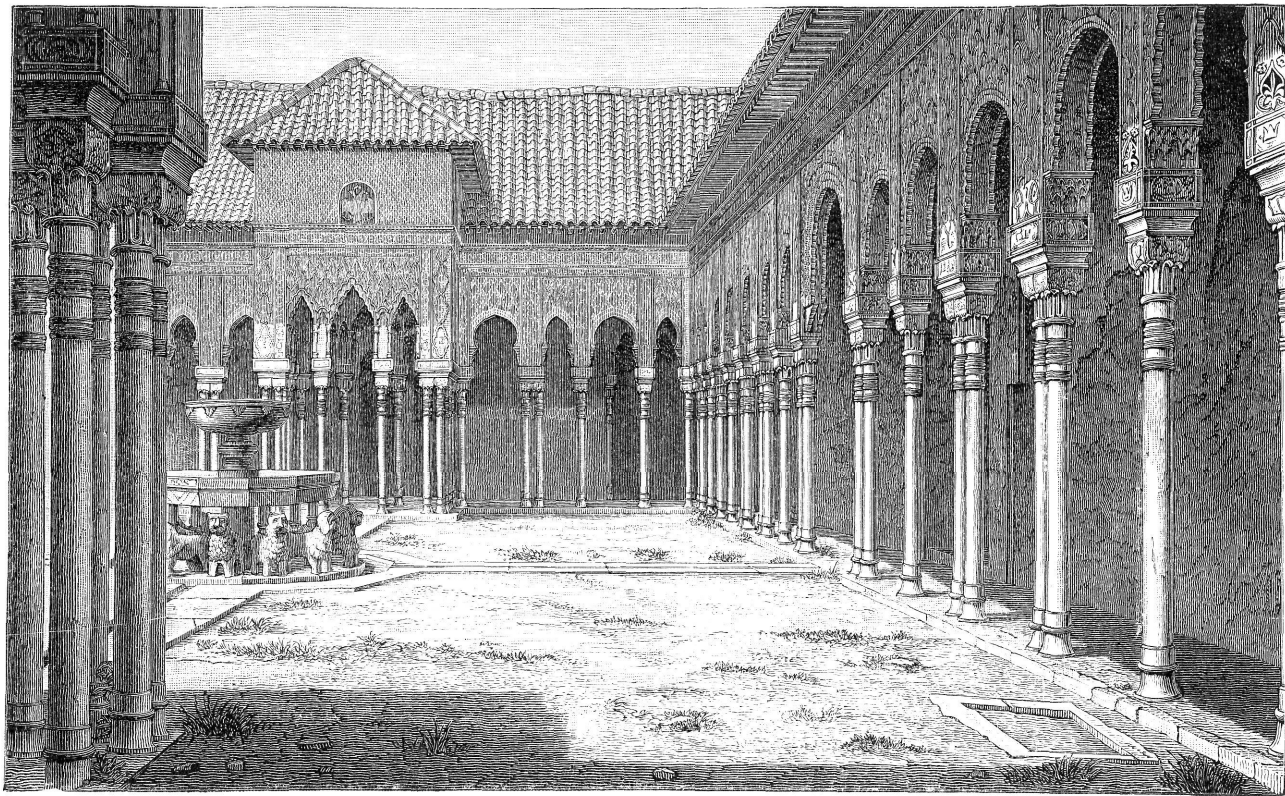




Sl. 23. Z a r a g o z a.



Sl. 26. Granada i Alhambra.

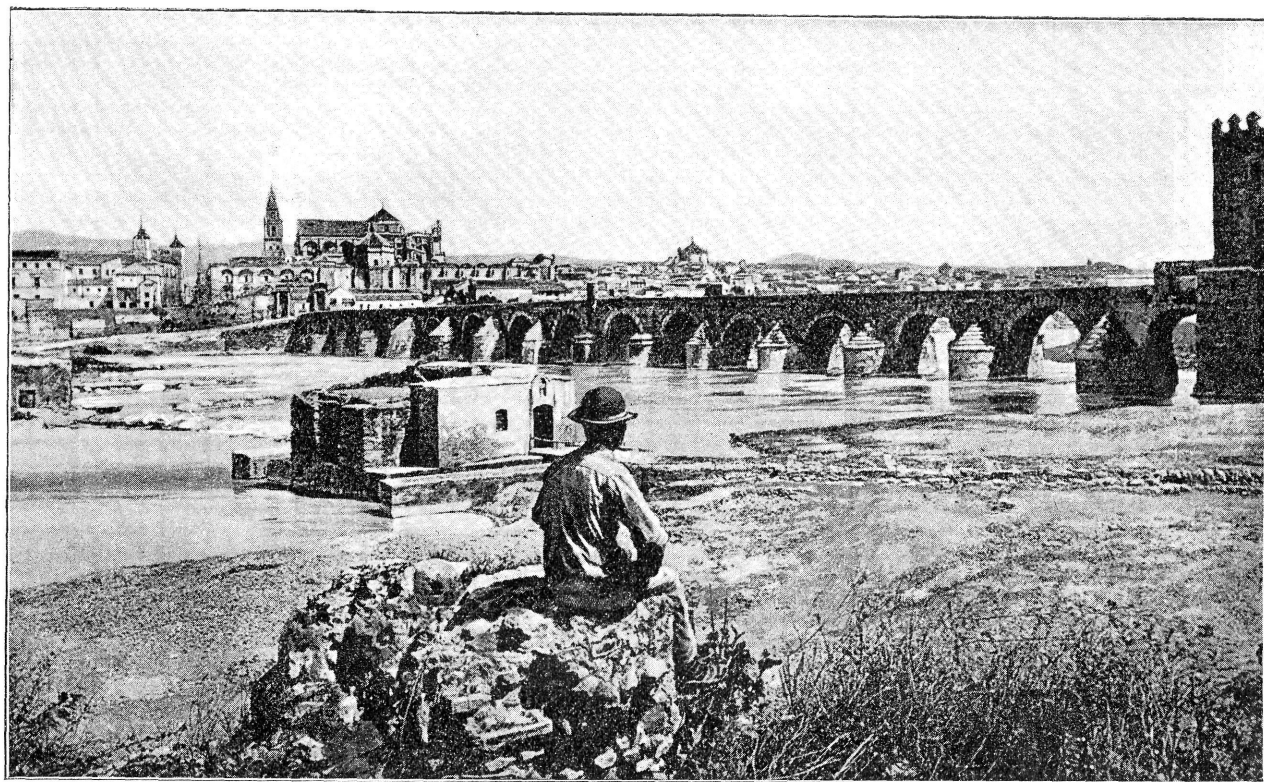


Sl. 27. Lavlje dvorište u Alhambri.



Sl. 31. C a d i z





Sl. 28. C o r d o v a.