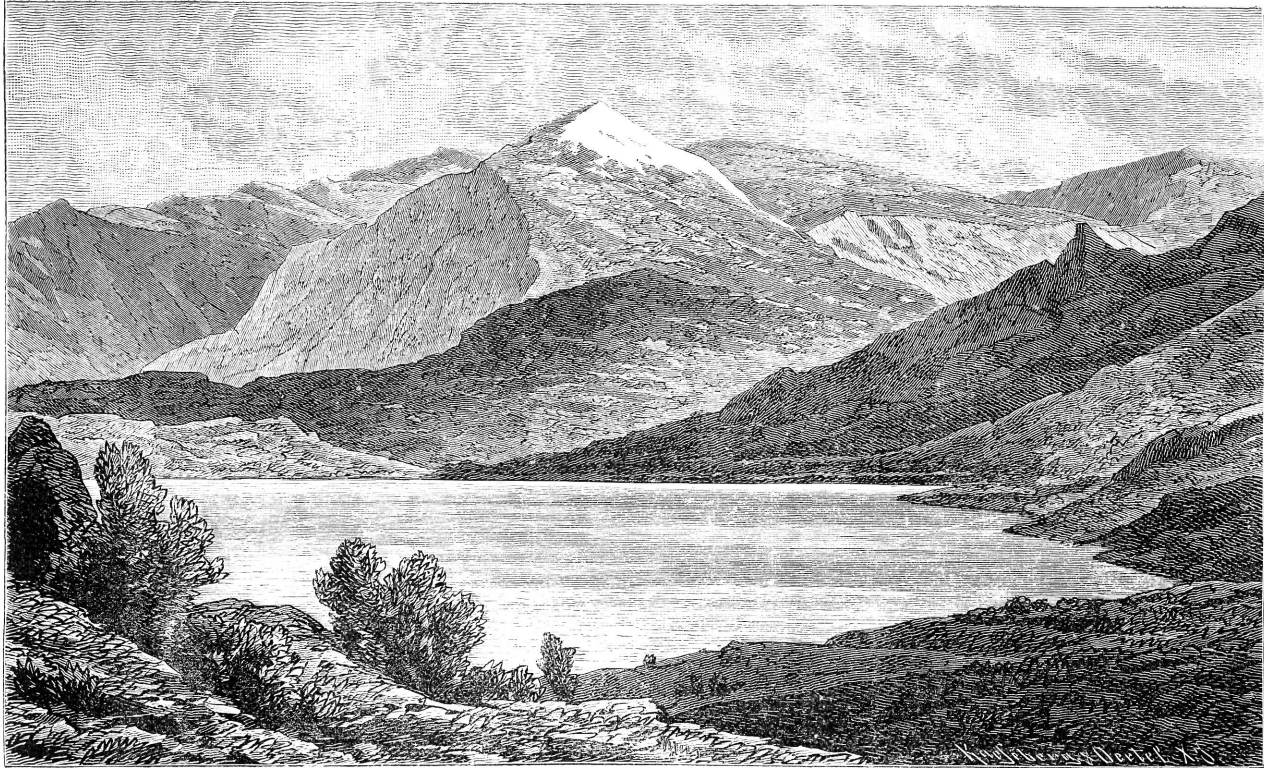
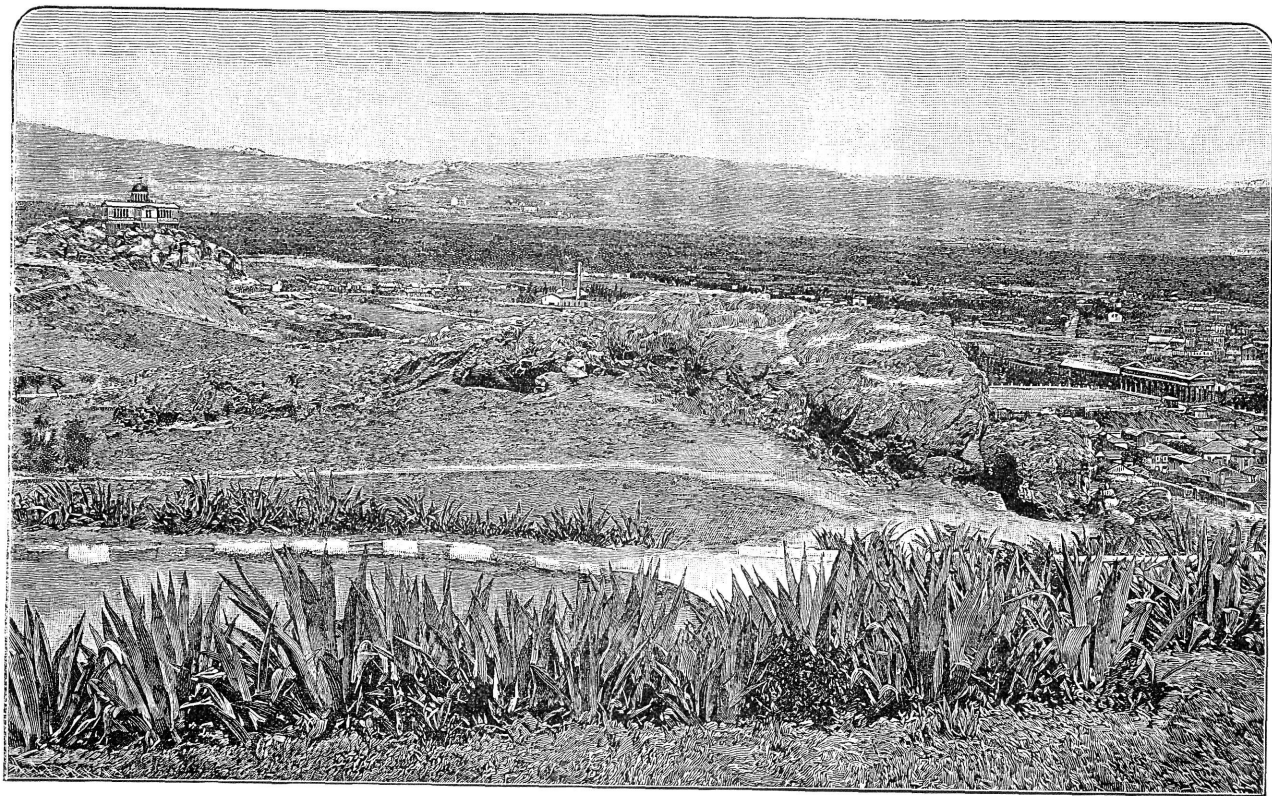


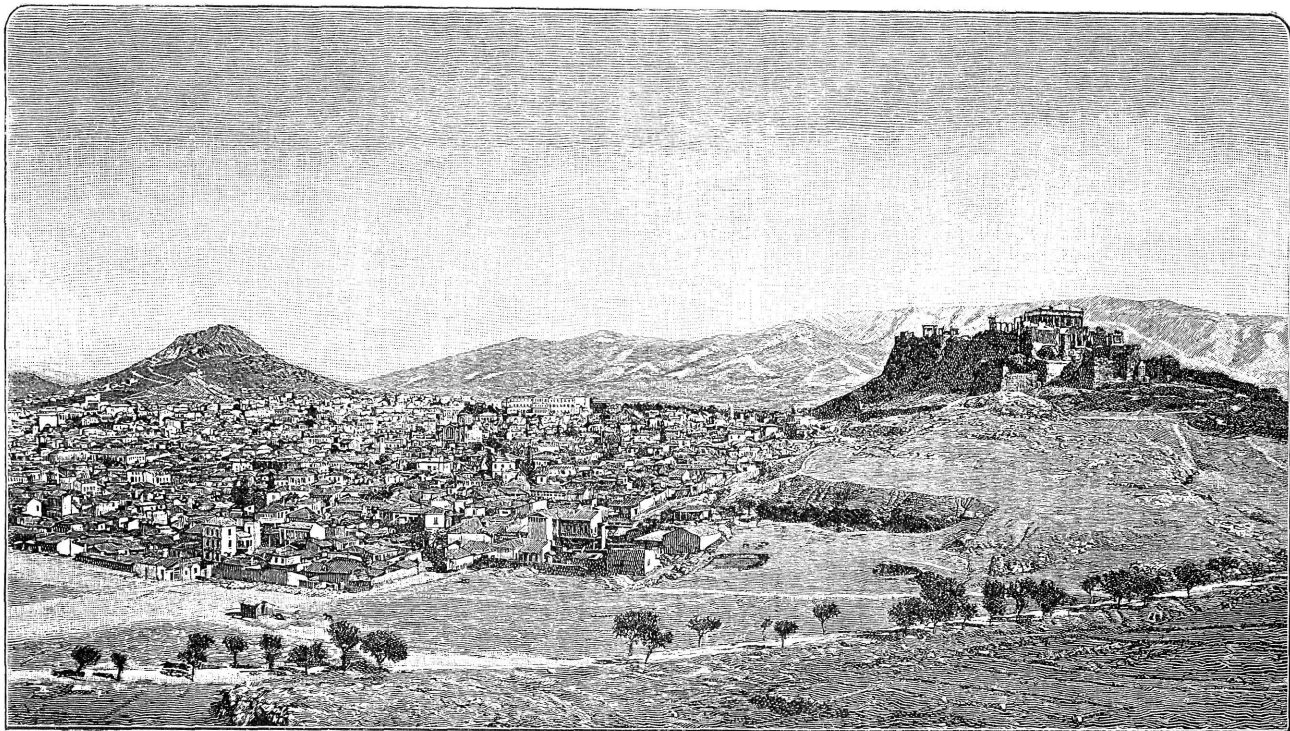
Sl. 78. Luka Aulida.



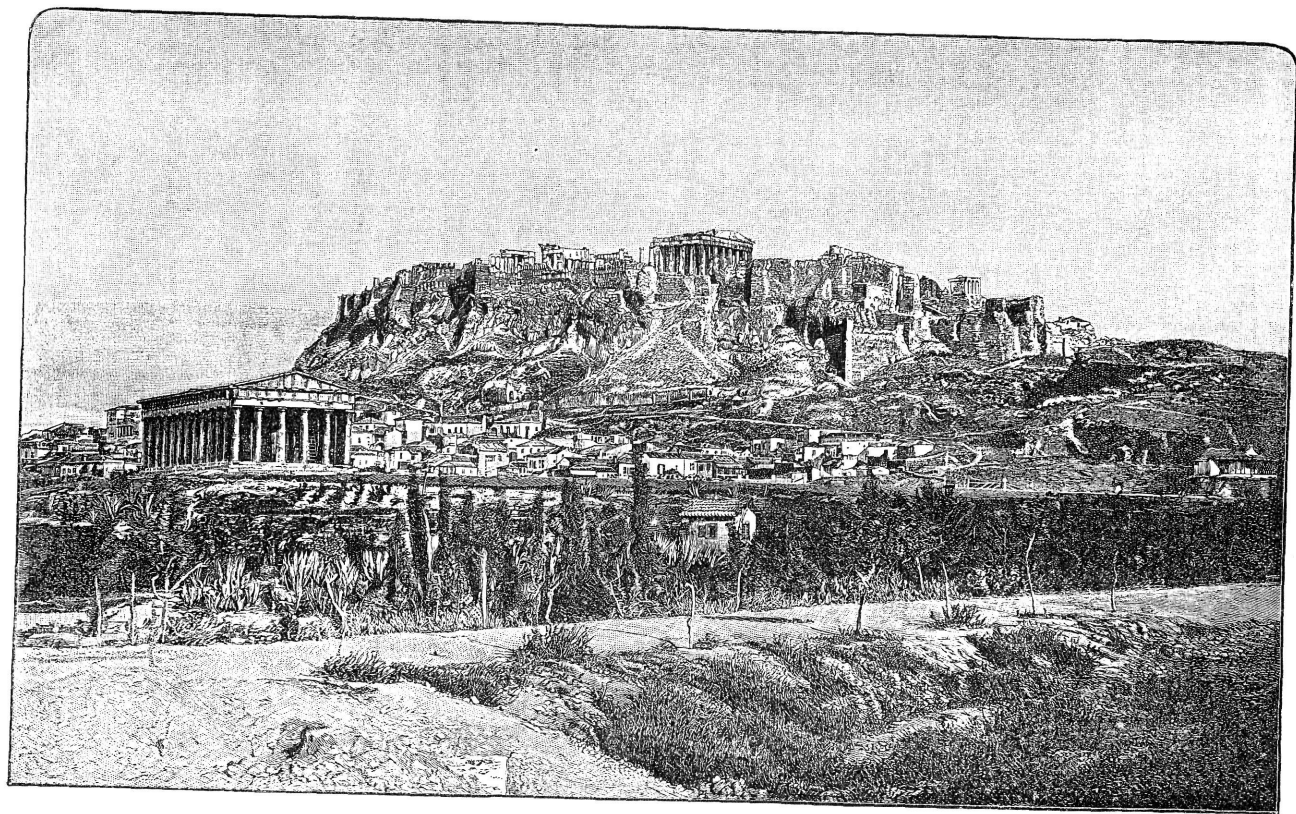
Sl. 79. Olymp sa Nezero-jezerom.



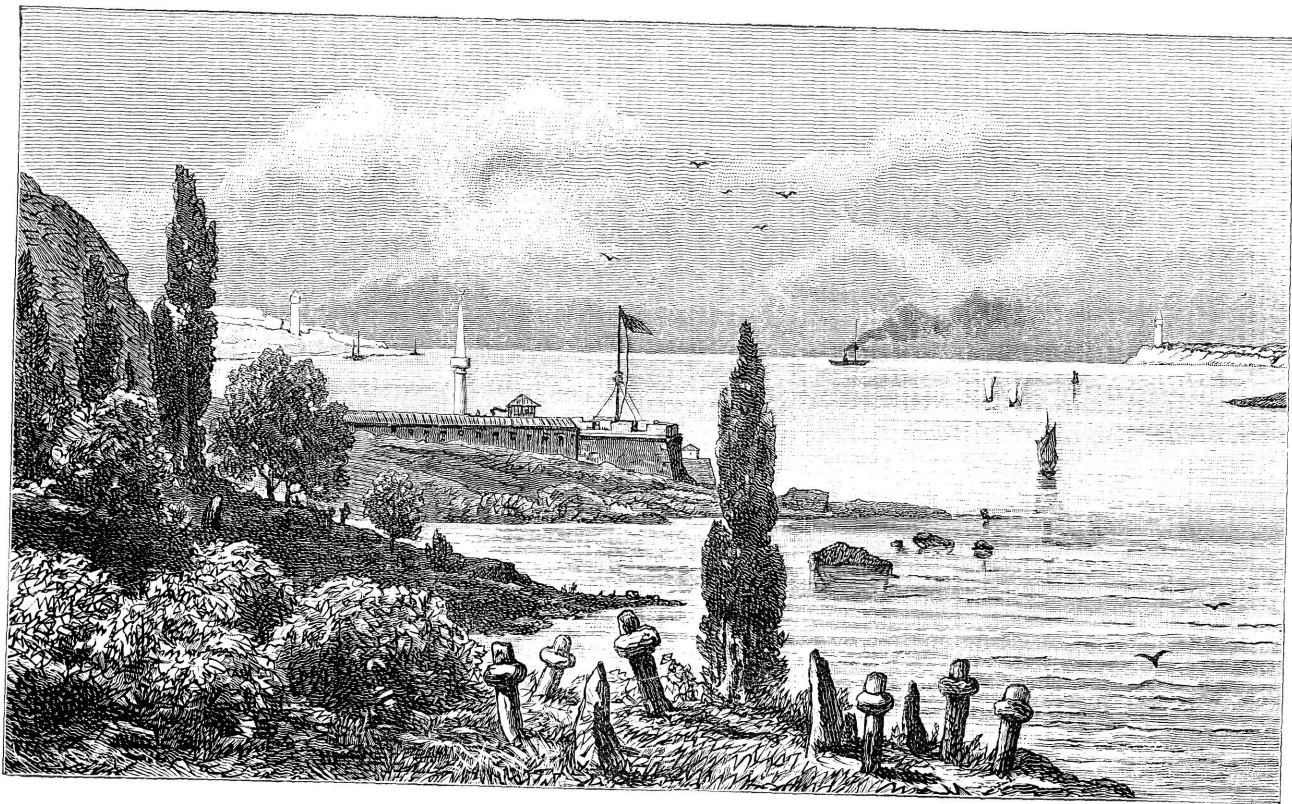
Sl. 81. Pogled na Kephisovu dolinu kod Atene.



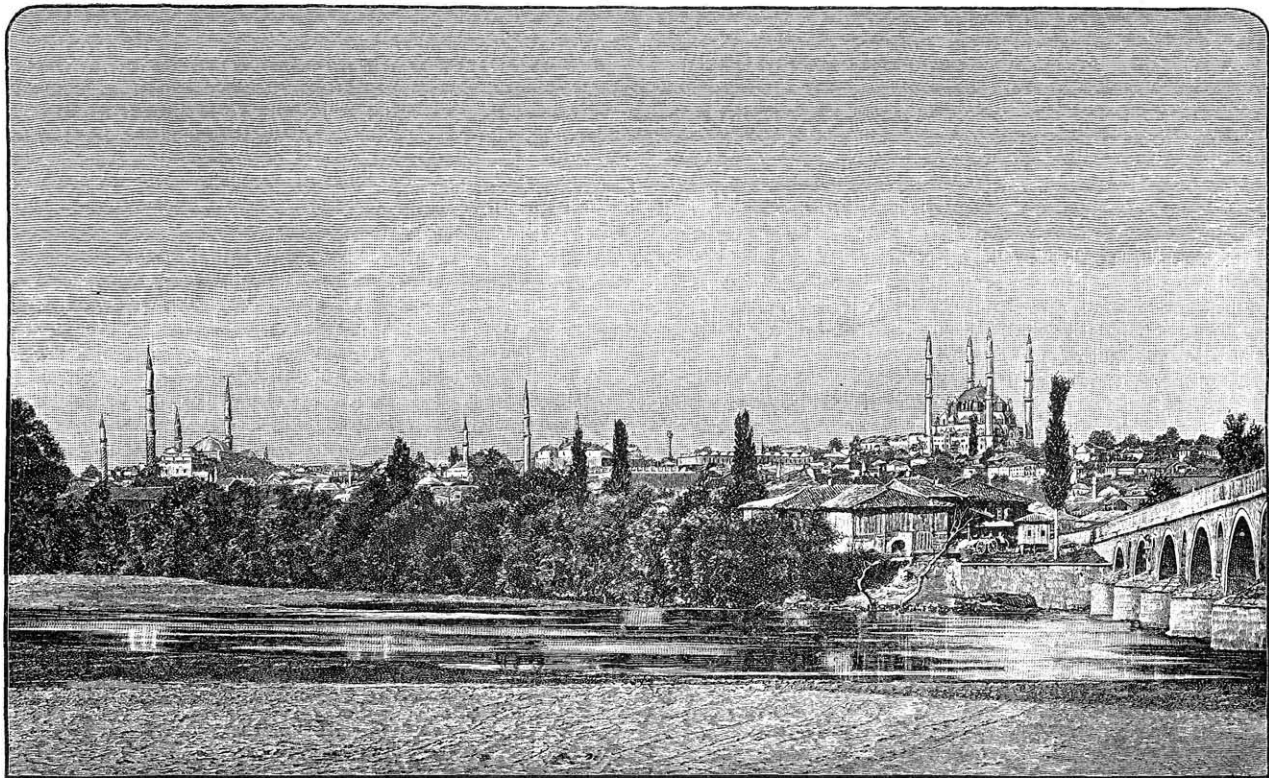
Sl 85 A t e n a .



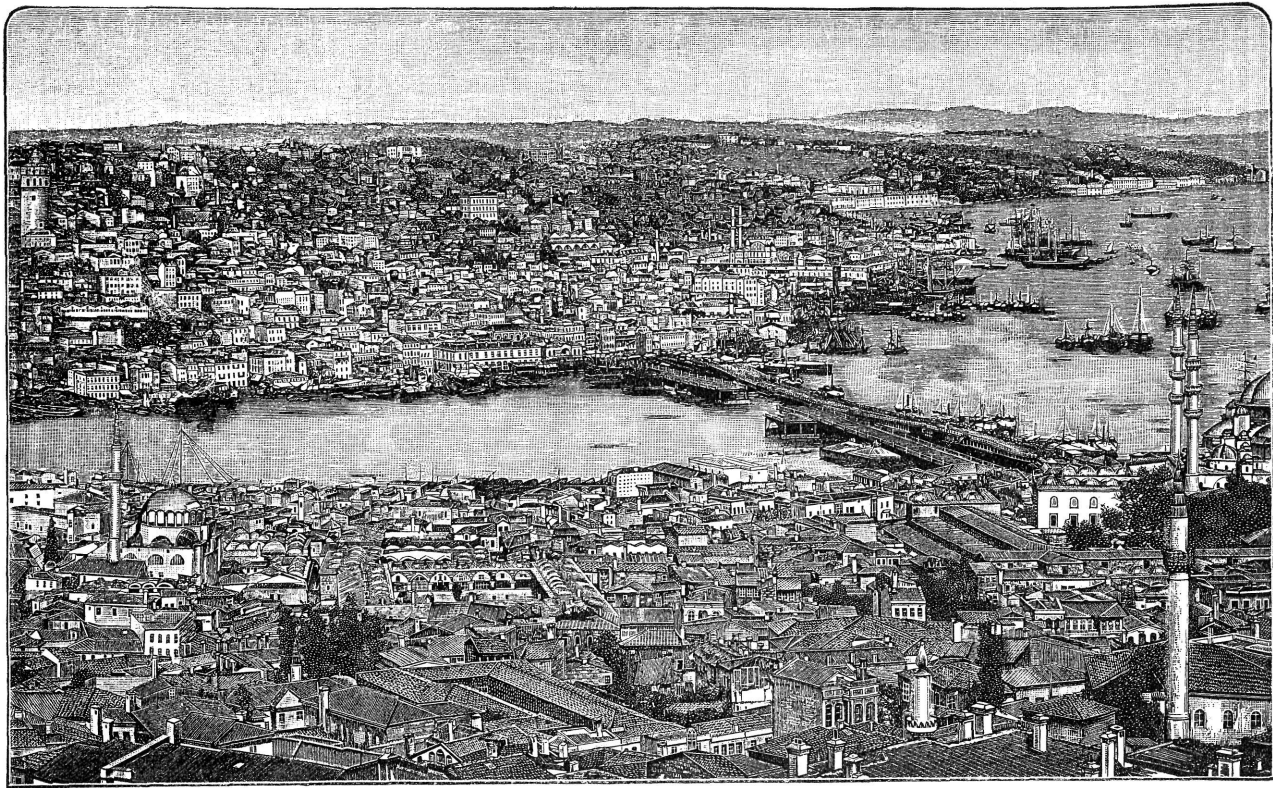
Sl. 86. Akropola Atenska.



Sl. 88. Kraj Bospora prema Crnome moru.

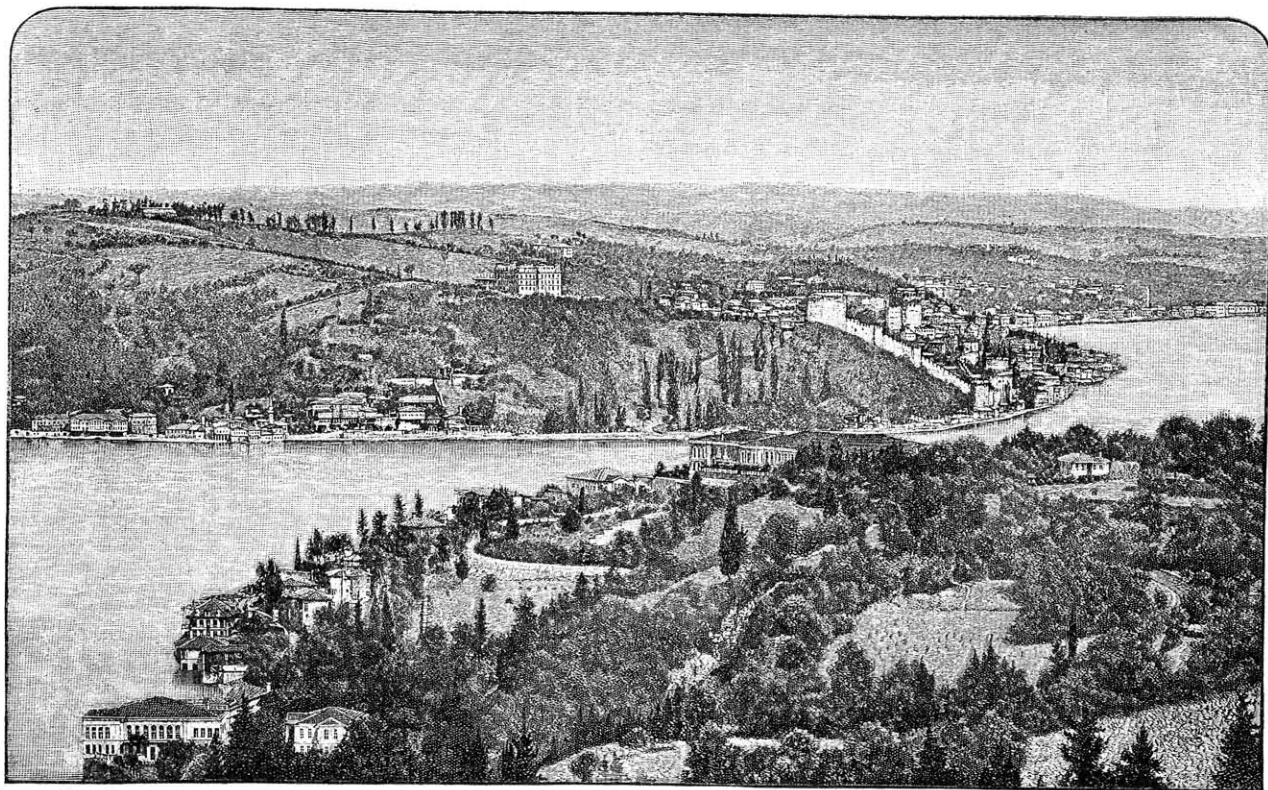


Sl. 89. Drinopolje.

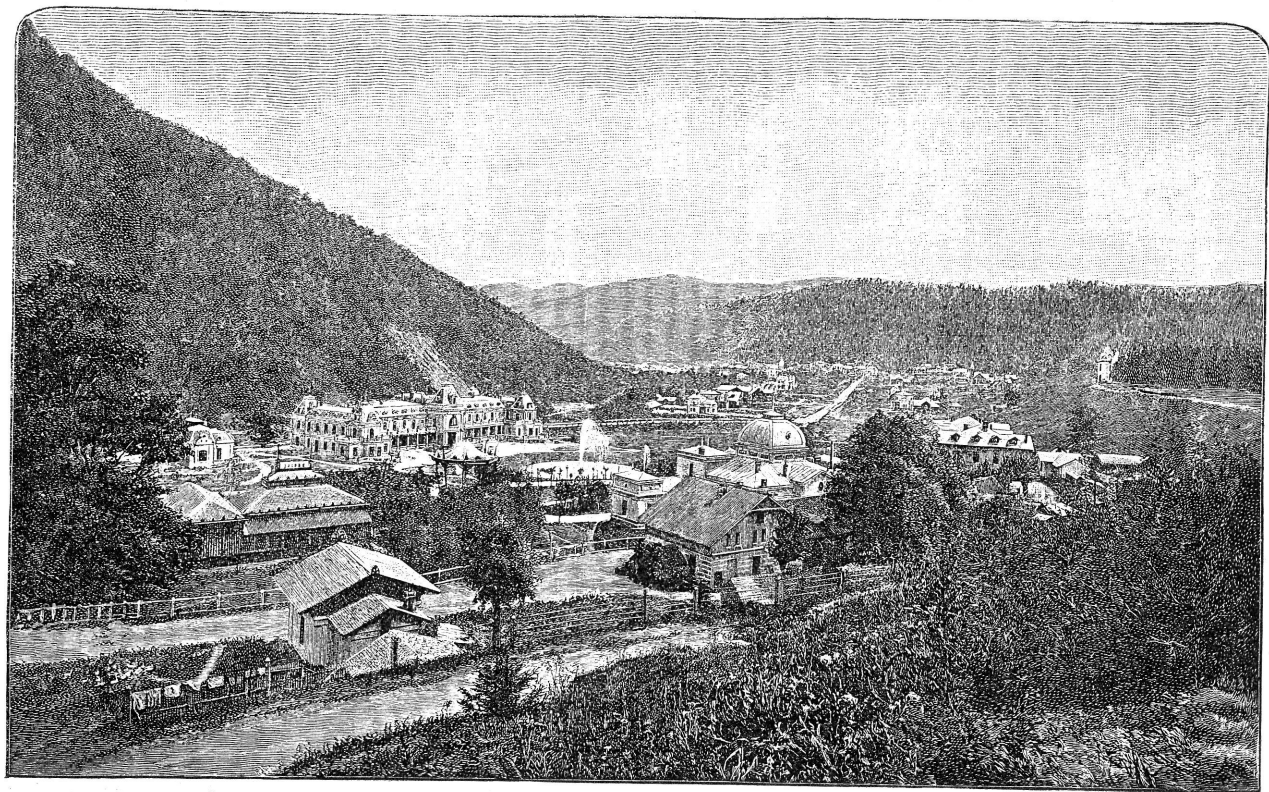


Sl. 90. Carigrad: Stambul sprieda, Galata preko mosta, a Pera u visu.

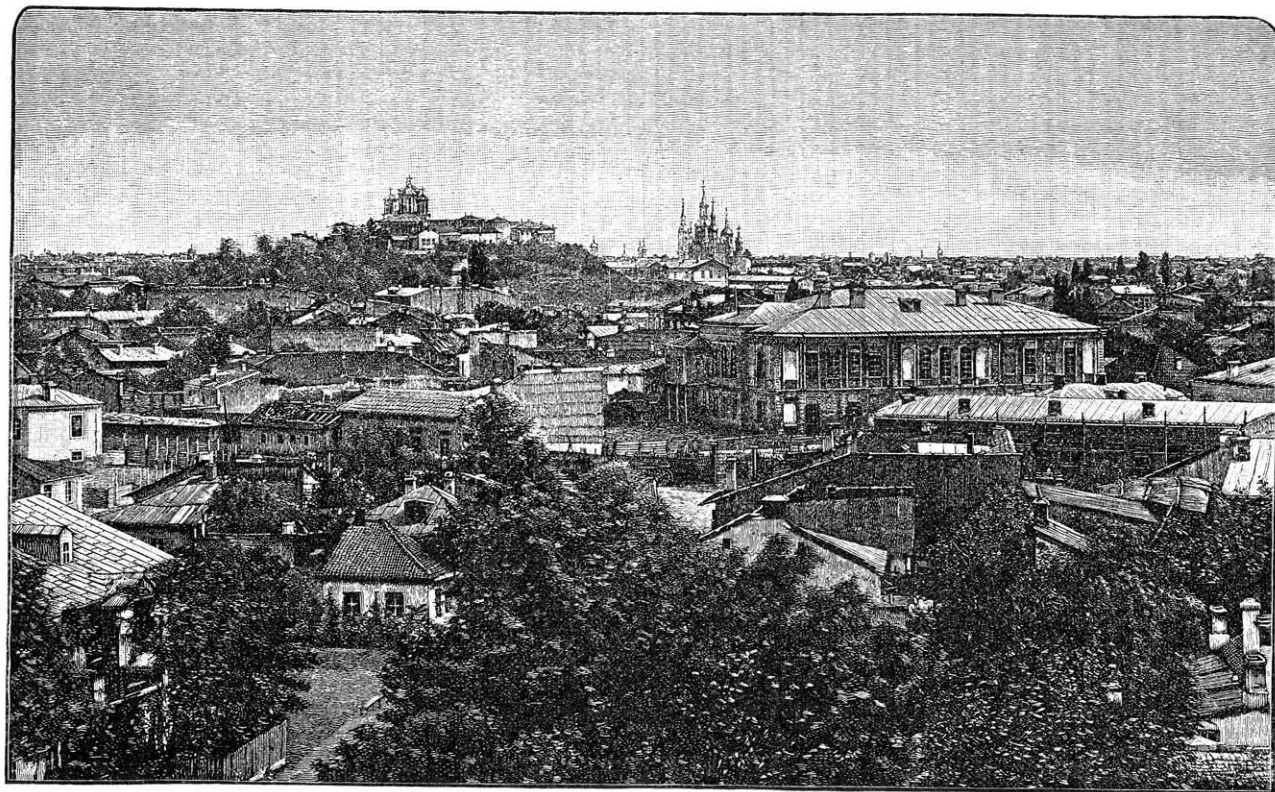




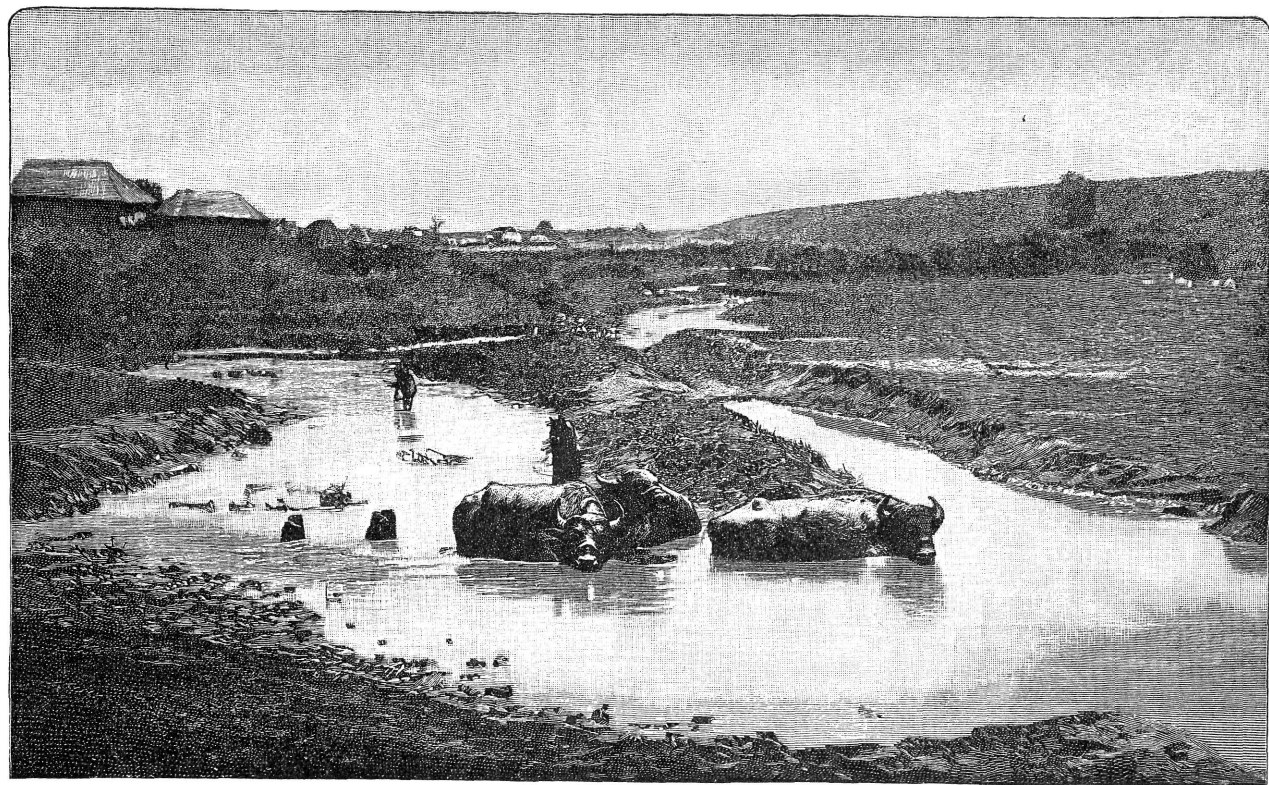
Sl. 91. Pogled na Bospor s azijske strane.



Sl. 94. S i n a j a.



Sl. 95. Bukurešt.



Sl. 96. Rumunjski kraj.